



Brilliant glass world developed with Otaru

Welcome to Otaru, Kitaichi Glass

We have produced handcrafted glassware in Otaru since more than a century ago, the very beginning of our company.

Recently, machine technologies have achieved a remarkable development. However, handcrafted glassware has its own gentle warmth and taste which can be created only by skilled craftsmen.

We always try to suggest suitable glassware for seasonal lifestyles. We hope the warmth will reach to every person who visit here and will help to enrich their lives.

Please take your time and enjoy shopping.



The history of Kitaichi Glass

Asahara Glass, the former company of Kitaichi Glass, has been founded in 1901 (34th year of Meiji).

From the next year, the railway construction work between Otaru and Hakodate had begun. The first president, Hisakichi Asahara began to produce kerosene lamps in Otaru. At that time, electricity supply was not spread enough then kerosene lamps were one of daily necessities. In 1910 (43rd year of Meiji), he began to produce floating glass balls for fishing. According to lifestyle changes, our products shifted to tableware to enrich people's lives. We always try to supply products which enhance quality of life.



The prosperous days of Otaru in Meiji era

Herring fishing brought first prosperity to Otaru. In Meiji era, many settlers began to immigrate to Otaru and lots of "Kitamaebune or Benzaisen", northern-bound ships, carried various kinds of commodities to Otaru. Otaru port began to grow as an important commercial port.

In 1880 (13th year of Meiji), a railroad between Otaru and Sapporo had been constructed as the third railroad of Japan. Otaru became a central area for commerce and transportation of Hokkaido and Otaru port improvement had progressed. At that time, more than 100 timber framed stone warehouses had been built one after another. The building of Kitaichi Glass Sangokan is one of them.

Business hours Open/9 a.m. – 6 p.m. No holiday
*Differ from each shop



Official site
<https://kitaichiglass.co.jp/>



Official shopping site for glassware
"Magokoro otodokebin"
<https://www.kitaichiglass.shop/>



Instagram



YouTube

@kitaichiglass

@kitaichiglass_otaru_official

@kitaichiglassotaru389

For gift and present
Kitaichi Glass Co., Ltd.

Address: 7-26 Sakaimachi
Otaru Hokkaido 047-0027 Japan

Tel. 0134-33-1993 (Main no.)



The distance on this map might be different from actual one due to space limitation.

For your information, from JR Otaru Station, 10-min. walk to Otaru Canal, **English**

English

20-min. walk to Kitaichi Glass Sangokan, Kitaichi Glass Outlet, Kitaichi Venetian Art Museum.

20-min. walk to Kitaichi Glass Sangokan, Kitaichi Glass Outlet, Kitaichi Venetian Art Museum.

2024.12

All Kitaichi Glass shops are "Tax-free shop". For more information, please ask our shop staff.

From Otaru to Sapporo, JR/30-33 min. ride by rapid train on Hakodate Line, JR bus-Chuo bus/55-min. ride by express bus, Car/55-min. drive on National Route 5 (40km), 30-min. drive on Sasson Expressway (toll road).

Introduction of Kitaichi Glass Shops

- Glass shop
- Liquor/Sake shop
- Place of Experience
- Cafe

To JR Minami Otaru Station
←

To JR Otaru Station
→

- Restroom
- Diaper changing table
- Barrier free restroom
- Bench
- Cafe
- Vending machine
- Information
- AED
- Parking lot
- Bicycle parking
- Bus parking



access
 JR 10 min. walk from JR Minami Otaru Station
 5 min. drive for Otaru Canal from Otaru IC of Sasson Expressway

Japan Tax-free Shop
 All Kitaichi Glass shops are "Tax-free shop".
 For more information, please ask our shop staff.

Kitaichi Glass Parking 2 hours free parking with more than 2,000 yen purchases.
 Please show your parking ticket to our cashier.



① Kitaichi Venetian Art Museum /Museum shop

"Trip to Venice in Otaru"
 "Museum shop" on the first floor sells directly imported Murano glass, glass pen, glass jewelry, ornament and heat-resistant glass.

In exhibition rooms on upper floors, Murano art glasses, the gondola that the former Princess of Wales, Diana enjoyed Venice and reproduced medieval aristocrat's life with Italian traditional furniture are exhibited. Wearing 18C style aristocracy dress and taking pictures will be a good memory of Otaru trip.

Official site of Kitaichi Venetian Art Museum →



* Kitaichi Glass Sangokan *



② Kitaichi Hall
 Fantastic café hall with 167 kerosene lamps. Take your time while feeling history of Otaru. Special milk tea and its soft ice cream are very popular.



③ Sangokan Terrace
 Specialty, "8 layer soft ice cream" Voluminous and instagrammable!
 Please find colorful lamps inside windows. Various kinds of soft ice cream and drinks

④ Floor "YO" - Kitaichi Plaza

Glass jewelry, nail file, pen, stained glass products and European style glassware. Introduce handcrafted European glassware with Japanese one.

⑤ Floor "WA"

"Tsukimi Glass"—when looking through a moon on the glass, rabbits or cats will be appeared in the moon. Introduce Japanese lifestyle with auspicious design and traditional "Kiriko (Cut Glass)" and ingenious glass.

⑥ Floor "COUNTRY"

The original products of Kitaichi Glass, kerosene lamp and floating fishing ball, heat-resistant glass and soy sauce bottle for daily life and miniature glass animals are introduced.

⑦ Italian wine shop Vinoteca

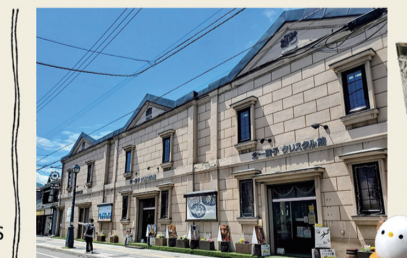
Since 1993, Kitaichi Glass has imported Italian wine directly. Introduce more than 100 wine brands through the year. Several brands can be found only here in Japan. Serve several different brands for each day at tasting corner.



⑧ Jizakeya Kitaichi
 Introduce famous brand "Otokoyama" and various sake, wine, shochu (spirit), local beer and whisky of Hokkaido breweries.



⑨ Outlet
 Lots of affordable glassware can only be found only this time. Stock items from lineup changes and reproduction series ones are introduced at reasonable prices.



⑩ Crystal Shop

Brilliant shop with lots of highly transparent crystal glassware. Suitable products for heartwarming and cozy time. Introduce a wide range of lineup: tableware, jewelry and ornament. Lots of "Shimaenaga" (long-tailed tit), Hokkaido's wild bird, products can be found here.



⑪ Kitaichi Glass Experience Studio

2 experience courses: "Sandblasting course" – sculpt your favorite patterns on a tumbler with sand "Beads arrangement course" – make an accessory with your favorite glass beads. Please try above courses for your souvenir and happy memory of Otaru.

Information of experience courses